

Panels

C Difficile Toxin AB PCR

Comprehensive Gastrointestinal (GI) PCR Panel

COVID, RT-PCR

SARS-CoV-2 Sequencing

Culture, Urine Routine

Fecal Occult Blood, IFOB

Hepatitis A, IgM

Hepatitis A, total

Hepatitis B, core, IgM

Hepatitis B, core, total

Hepatitis B, surface, IgM

Hepatitis B, surface, total

Hepatitis B, surface Antigen

Hepatitis B, surface Antigen, confirmation

Hepatitis C Antibody, HCV

H pylori Antigen IA (stool)

Human metapneumovirus (hMPV)

Influenza A & B, Molecular

Methicillin-Resistant Staphylococcus aureus (MRSA) Colonization Screening Culture

HIV 1/0/2, Antigen/Antibody (4th gen)

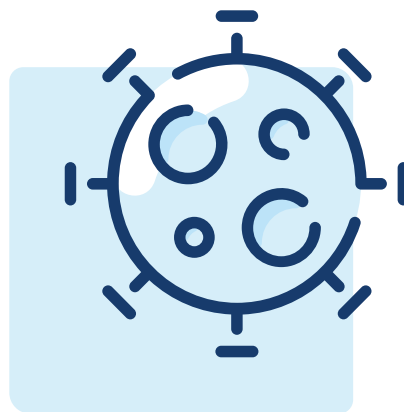
Norovirus GI/GII

Respiratory Syncytial Virus (RSV), Molecular Stool PCR Panel

Streptococcus Group A, molecular

Streptococcus Screening (Strep A & Strep C/G), Molecular

Urinalysis, Dipstick + Microscopic Only, No Culture



We offer on-site PCR testing for the Portland Oregon area with results in less than 24 hours.